

# Software-Update Bluetooth hands free FISCON

Audi  
VW  
Skoda  
Seat  
Mercedes  
BMW

## Content

General advice .....	1
Safety Instructions .....	2
References of legal regulations for operation .....	2
Needed Hardware/ Software .....	3
Software check .....	3
Update preparation - Hardwareversion 1 .....	4
Update preparation - Hardwareversion 2 .....	5
Update procedure .....	6

## General advice

While developing this product, your personal safety combined with the best operating service, modern design and an up-to-date production technique was especially taken into account.

Unfortunately, despite the utmost care injuries and/or damages might occur due to improper installation and/or use.

Please read the attached instruction manual completely with great care and keep it!

All articles of our production line pass through a 100 % check - for your safety and security.

We reserve the right to carry out technical changes which serve the improvement at any time.

According to each article and purpose, it is sometimes necessary to check each country's legal regulations before installing and starting the unit.

In case of guarantee claims, the device has to be sent back to the seller in the original packaging with the attached bill of purchase and detailed defect's description. Please pay attention to the manufacturer's return

requirements (RMA). The legal warranty directions are valid.

The guarantee claim as well as the operating permission becomes invalid due to: Der Garantieanspruch und auch die Betriebserlaubnis erlischt durch:

- a) unauthorized changes to the device or accessories which have not been approved or carried out by the manufacturer or its partners*
- b) opening the device's frame*
- c) device's repairs carried out by one's own*
- d) improper use / operation*
- e) brute force to the device (drop, wilful damage, accident etc.)*

During installation, please pay attention to all safety relevant and legal directions. The device has only to be installed by trained personnel or similarly qualified people.

## Safety Instructions

Installation requires special knowledge.

Do not install the unit yourself. For safe and reliable installation, consult a dealer having special knowledge.

- *Never use bolts or nuts from the car's safety devices for installation. If bolts or nuts from the steering wheel, brakes or other safety devices are used for installation of the unit, it may cause an accident.*
- *Use the unit with a DC 12V negative ground car. This unit cannot be used in large trucks which use a DC 24V battery. If it is used with a DC 24V battery, it may cause a fire or accident.*
- *Avoid installing the unit in following places: - Where it would hinder your safe driving. - Where it could damage the car's fittings.*
- *This unit is only for use in the following vehicles. Only connections described within this instruction guide are allowed or required to use for installation.*
- *For damage impact caused by faulty installation, unsuitable connections in appropriate vehicles Kufatec GmbH assumes no liability.*
- *We advise you that these units process data out of the MOST - protocol from the vehicle. As the supplier of this device we don't know the overall system you are working with. If our device causes damage due to other changes made by to the vehicle Kufatec GmbH assumes no liability.*
- *Kufatec GmbH supplier do not guaranty the use of the product for changing's within a new vehicle series.*
- *If the car manufacturer's don't agree with the installation of our device by reason of warranty the Kufatec GmbH assumes no liability. Please check conditions and warranty before you begin the installation.*
- *Kufatec GmbH supplier reserves the right to change the device specifications without notice.*
- *Errors and changes excepted.*

## References of legal regulations for operation

Only use this unit in the intended domain.

If you use it in a foreign domain, if the unit is not installed properly, or if the unit will be reconstructed, the guarantee will expire.

## Needed Hardware/ Software

- Bluetooth notebook (Bluetooth adapter)
- Bluetooth mobile phone
- Compatibel with Windows Vista, XP
- Data compression software WinZip



Fig. 1

**Note:** Once the update has started, it may not be interrupted under any circumstances. This will cause damages of the FISCON software.

## Software check

Depending on the hardware version the FISCON system needs to have different update software.

**Hardware version 1**



**Hardware version 2**



**Hardware version 2**



Fig. 2

The updates are available under the link below:

<http://www.kufatec.de/shop/infocenter.php/anleitungen>

Please compare the update-file with the fitted hardware version.

**Note:** Do not update the FISCON which unsuitable software!

## Update preparation - Hardwareversion 1



Hardwareversion 1

### Step 1: Extract

Download the latest firmware update from the Kufatec web-site and extract it to a folder on your notebook using WinZip (Fig 3).

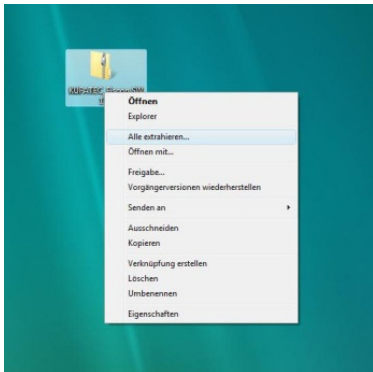


Fig. 3

### Step 2: Software installation

After the file as been extracted start the “BT\_Updater” program (Fig 2).

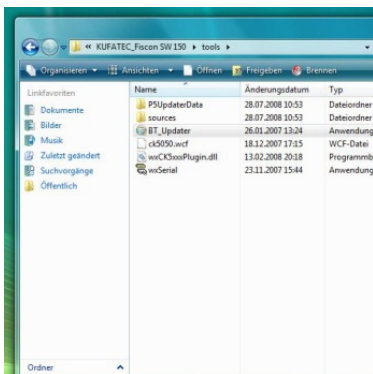


Fig. 4

Follow the installation wizard (Fig 5). Select a path for the software to be installed in. After successful installation close the installation wizard (Fig 6).



Fig. 5

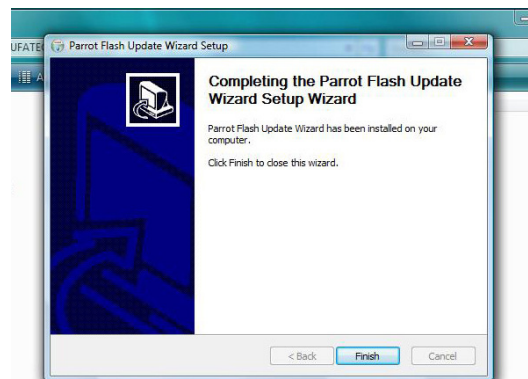


Fig. 6

## Update preparation - Hardwareversion 2



Hardwareversion 2

### Step 1: Extract

Download the latest firmware update from the Kufatec web-site and extract it to a folder on your notebook using WinZip (Fig 7).

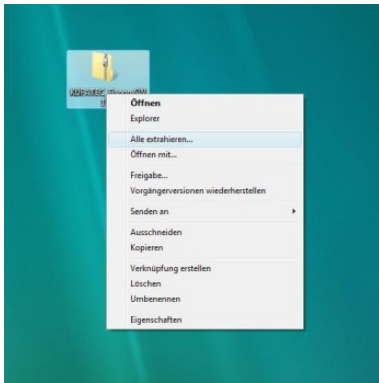


Fig. 7

### Step 2: Software installation

After the file as been extracted start the „Setup-OEM“ program (Fig. 8).

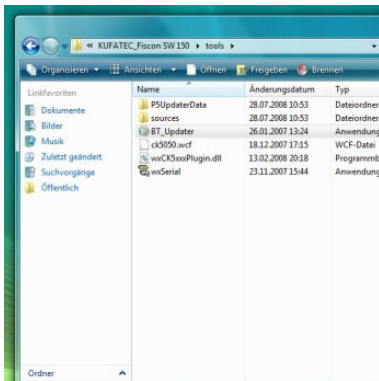


Fig. 8

Follow the installation wizard (Fig. 9). Select a path for the software to be installed in (Fig 10).

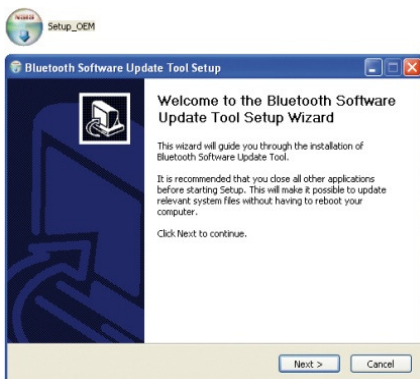


Fig. 9

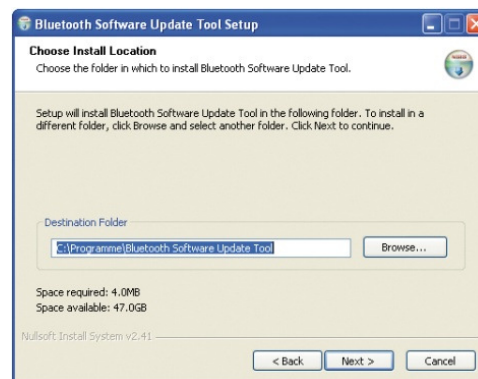


Fig. 10

After successful installation close the installation wizard (Fig 12).

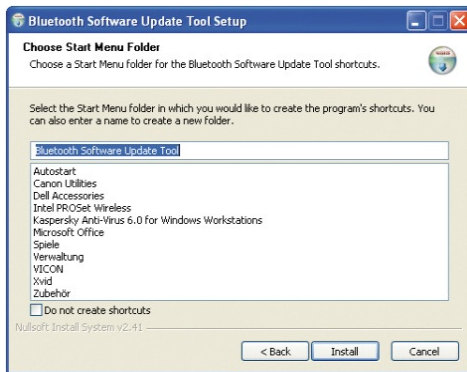


Fig. 11

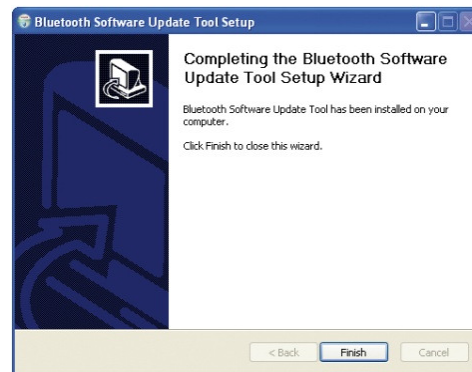


Fig. 12

## Update procedure

### Step 3: Bluetooth connection

Pair up your Bluetooth mobile telephone to the FISCON (e.g. RNS-E Fig 13).



Fig. 13

### Step 4: change into Update mode For Audi, Seat

Vehicle	Head unit
Audi	RNS-E, BNS 5.0 Concert (A4 8K, A5, Q5 8R) Symphony (A4 8K, A5, Q5 8R)
Seat	Media System 1.0 Navigation 6.5"

Turn the dial and spell out the following text: „#582\*7873283#,, and then hit the Select key (Fig 14).

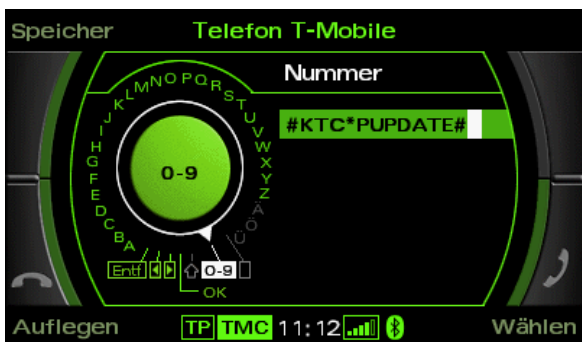


Fig. 14



Once the **Select** key has been pressed the FISCION unit will be in Update mode (Fig15).

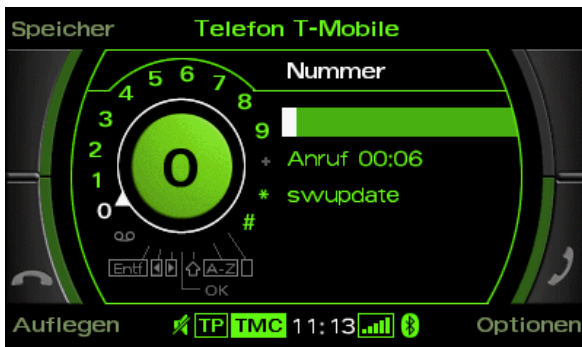


Fig. 15

## change into Update mode ...For Audi MMI 2G

Turn the dial and spell out the following text: „**#582\*7873283#**“, and then hit the dial key (Fig 16).

Once the **Select** key has been pressed the FISCION unit will be in Update mode (Fig 17).

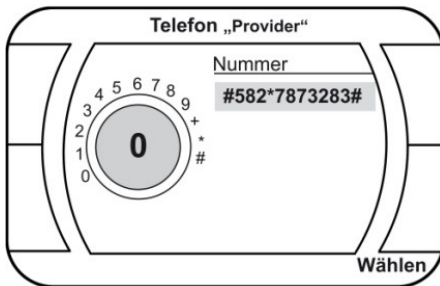


Fig. 16

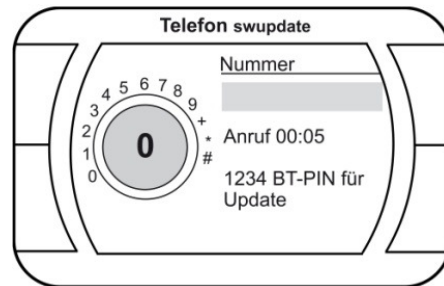


Fig. 17

## change into Update mode ...For VW, Skoda

The menu **SW-Update** has to be selected by using the FISCION telephone menu within the driver information system.



Fig. 18

**Note:** Step to the menu SW UPDATE. For activating the update mode the button has to be pressed for at least **6 seconds**.



## change into Update mode ...For Mercedes

Turn the dial and spell out the following text: „**258222025**„, and then hit the dial key (Fig 19). Once the **Select** key has been pressed the FISCION unit will be in Update mode.



Fig. 19



Fig. 20

The connection between your mobile telephone and the FISCION will be canceled automatically.  
All of your previous profiles will be lost upon completion.

## change into Update mode ...For BMW

Turn the dial and spell out the following text: „**258222025**„, and then hit the dial key. Once the **Select** key has been pressed the FISCION unit will be in Update mode.

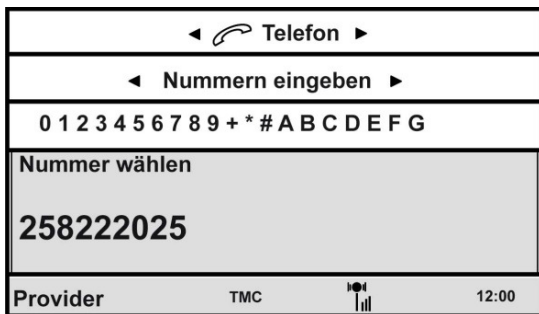


Fig. 21

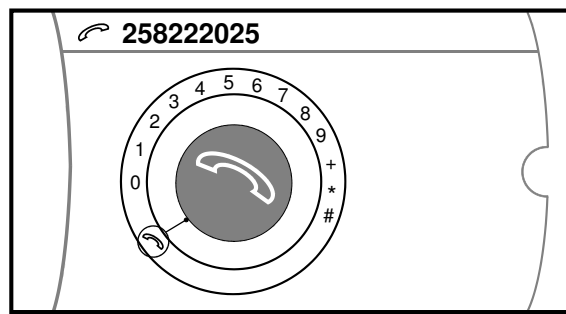


Fig. 22

The connection between your mobile telephone and the FISCION will be canceled automatically.  
All of your previous profiles will be lost upon completion.

## change into Update mode ...For Audi FISCION „BASIC“-Version

In case of version „Basic“ the update mode has to be activated by mobil phone. **Condition** is that the mobile **transmits** the number to the head unit. Enter the **Code \*582#025** and press the „Call“ - button.



**Note:** an announcement „the number is not available“ will be completed. The update mode has been activated.

## Step 5: start update software For hardware version 1 (HW 1.4)

Select “Parrot Flash Update Wizard” from the start menu (Fig 23). ). Select “Next” (Fig 24).

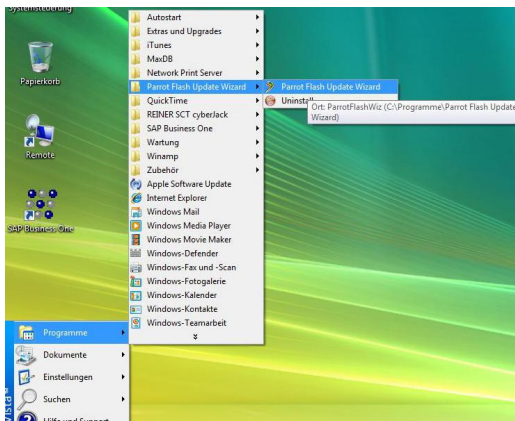


Fig. 23

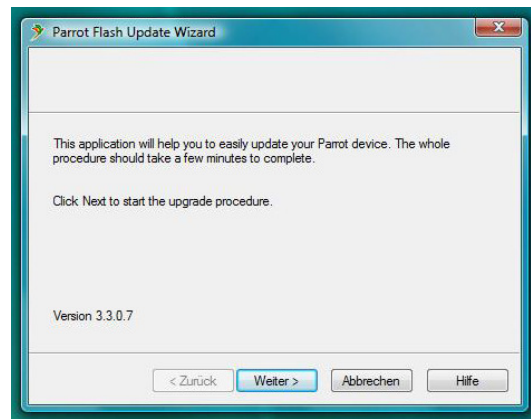


Fig. 24

Select **CK505X** and then hit “NEXT” (Fig. 25)

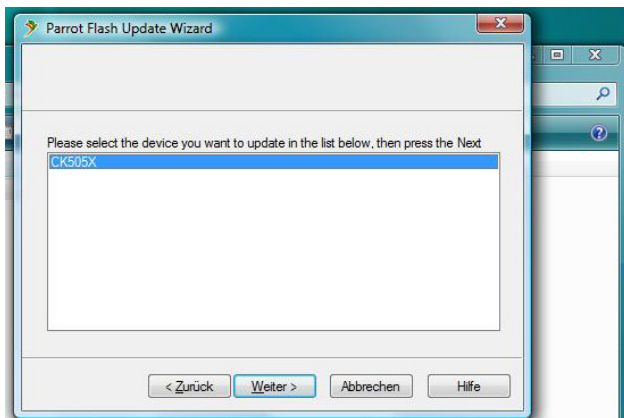


Fig. 25

## start update software For hardware version 2 (HW 2.4)

Select “Bluetooth Software Update Tool” from the start menu. Select “Next” (Fig 26, 27).

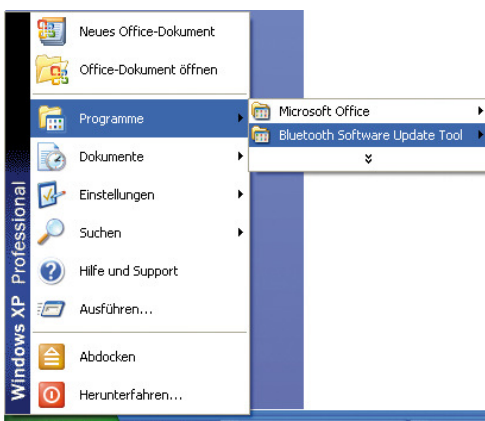


Fig. 26

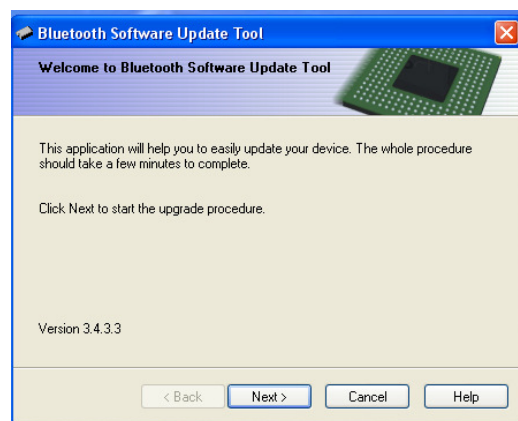


Fig. 27

Select „**TYPE-D**“ und hit „**NEXT**“ (Fig. 28). Select **CK505P** and then hit “**NEXT**” (Fig 29).

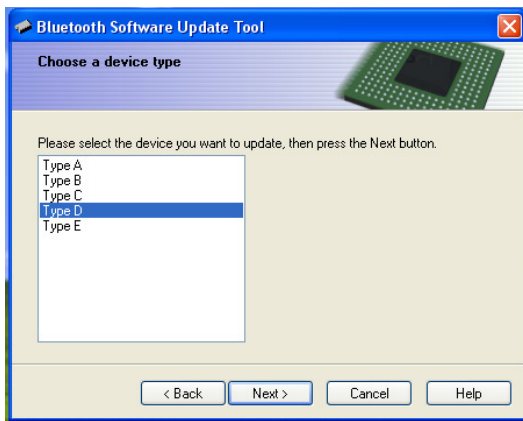


Fig. 28

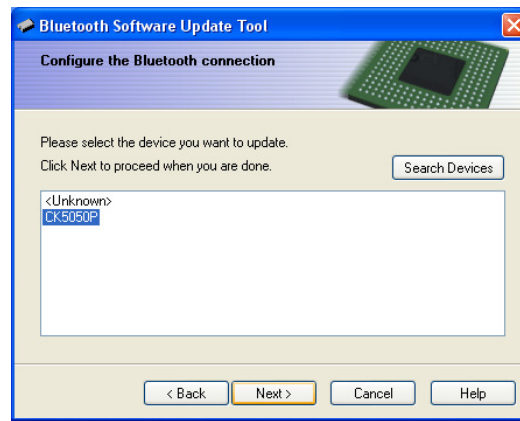


Fig. 29

## Step 6: Update Version

Select “**Browse**” and select the navigate to where you have the firmware update stored (Fig 30).

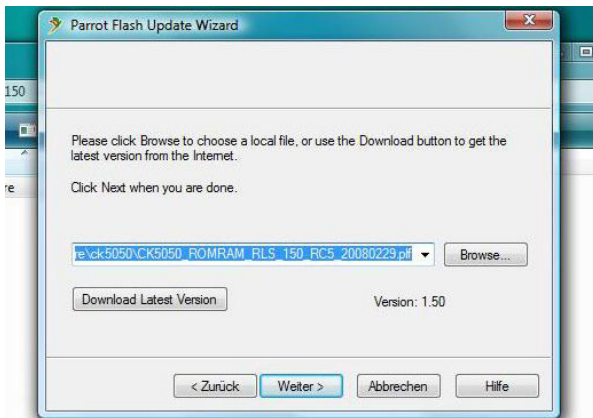


Fig. 30

## Step 7: Bluetooth connection

Select the Update method “**Bluetooth Connection**” (Fig 31) and then select “**Next**”.

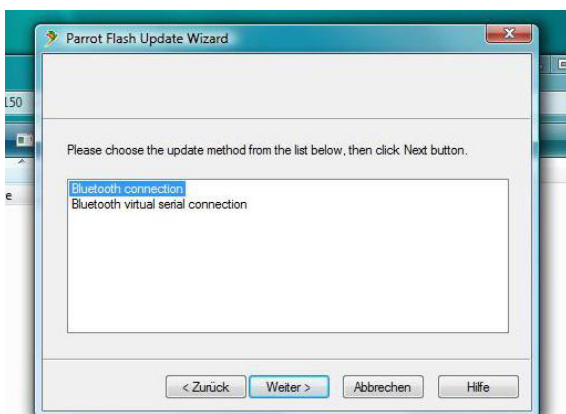


Fig. 31

Select “**Search Devices**” (Fig 32).

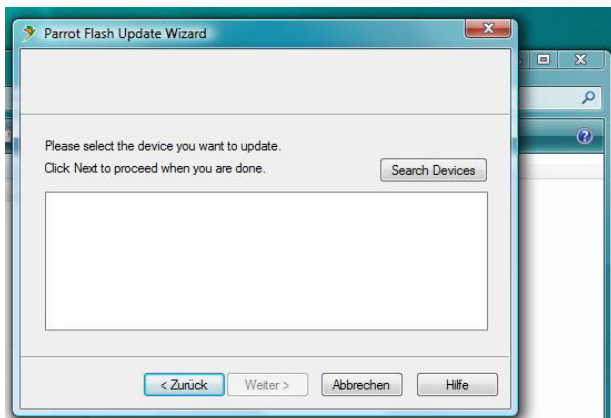


Fig. 32

Select the “**CK5050**” and then select “**Next**” (Fig 33)

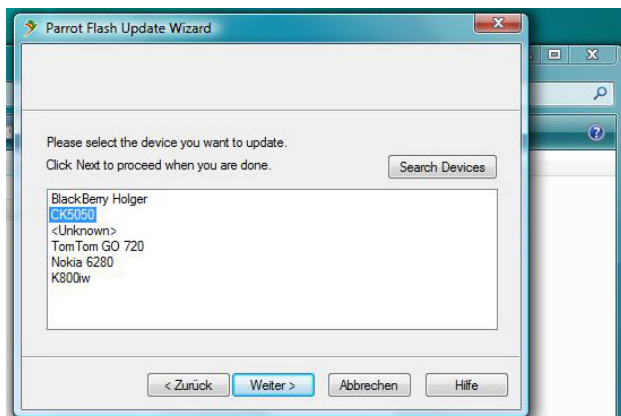


Fig. 33

## Step 8: Software Update

Enter the PIN “**1234**” and the update process will begin (Fig 34).



Fig. 34

Please wait for the installation to finish (Fig 35). When the software installation is finished please select **“Finished”** (Fig 36).

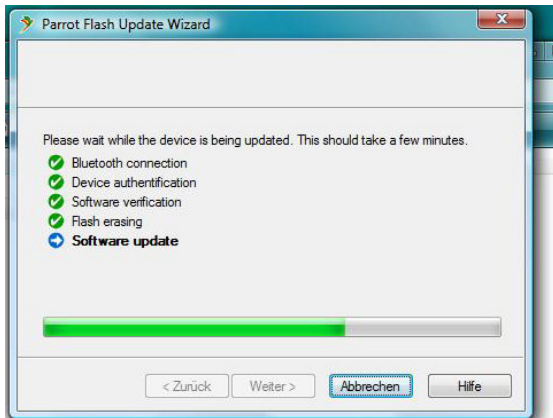


Fig. 35

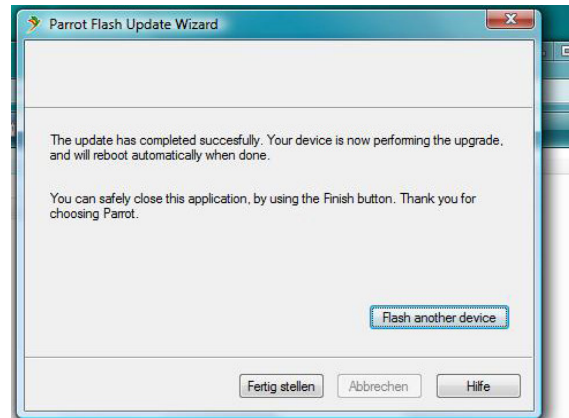


Fig. 36

After completion of the update the FISCON software is automatically re-started. Your navigation screen will look like Fig. 37 (e.g. Audi MMI 2G) on the telephone page.

As soon as the Bluetooth connection has been established, the FISCON unit is ready for use.

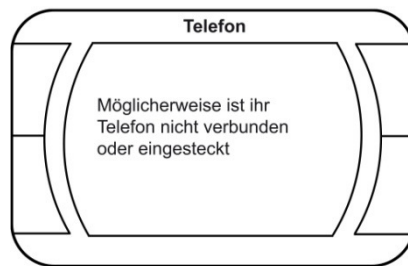


Fig. 37